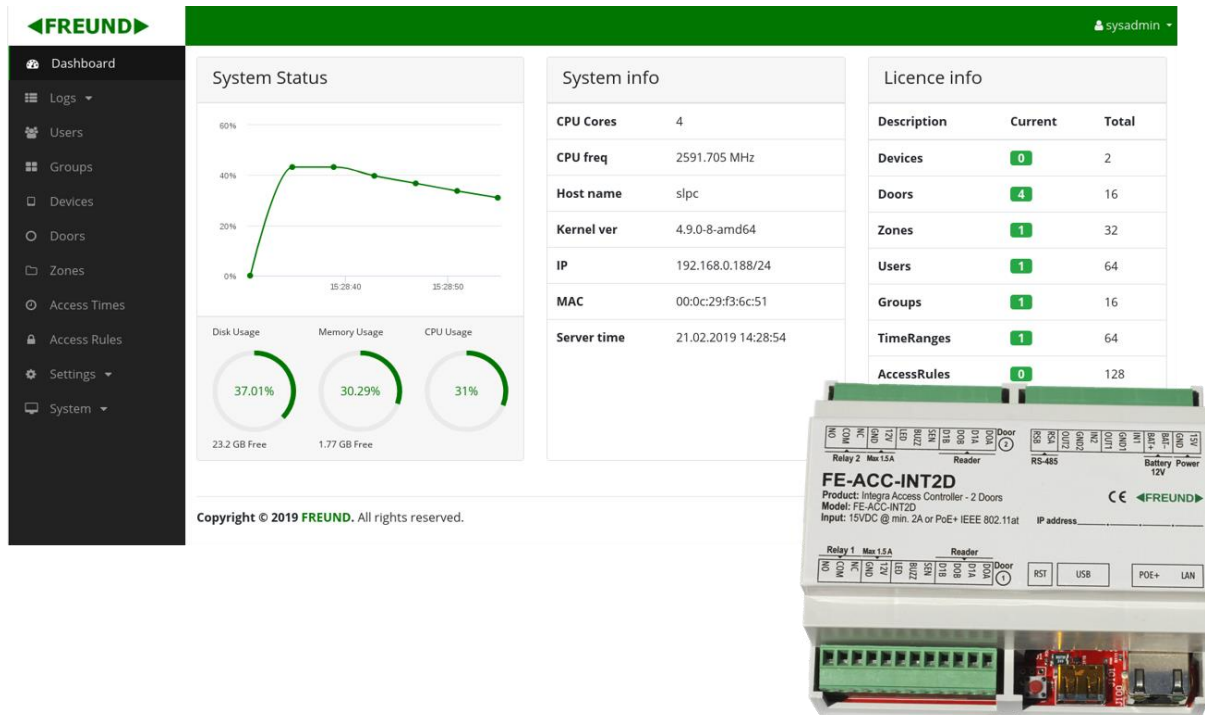


## FREUND FE-ACC-INT2D

**FREUND IP-INTEGRA FE-ACC-INT2D** Access Controller is fully scalable Linux based unit that can be easily configured through intuitive WEB interface.



Supporting standard Wiegand, OSDP and IP/TCP protocols and 125 kHz / 13.56 MHz card readers with and without PIN keypad option.

Intuitive setup of the Access Control System through web browser. No system complexity increased by extending system with additional modules. Easily scalable system, where adding additional controller module for additional 2 or 4 doors is just plug-and-play using INTEGRA-clustering and auto-provisioning option. **Supporting PoE+, so no additional power supplies are needed for powering electrical locks.**

Access the System from anywhere and connect geographically separated systems in one system through INTEGRA FQDN-service.

FREUND IP-INTEGRA Access Control System is easy integrable with IP-INTEGRA INTERCOM, IP-INTEGRA Public Audio systems and 3<sup>rd</sup> parts solutions supporting standard ACC-protocols.

<b>Specification</b>	
<b>SYSTEM</b>	
Processor	Allwinner H2 @ 1.3GHz & Quadcore Cortex – A7
Memory	512 MB DDR3
MCU – Sub Processor	STM32F-32BIT
MCU Memory	256 KB Flash
<b>INPUT/OUTPUT</b>	
Input	4x Wiegand & 2x GPI Ports
Output	2x GPO Ports
Communication	RS-485, USB & IP/TCP
Reader Control & Status	2x LED, 2x BUZZ, 2x SEN
<b>CAPACITY</b>	
Users / Groups	100.000 / 1.000
Cards / Events	500.000 / 1.000.000
Controllers in Cluster	Limited by Network capacity
Physical Doors / Virtual Doors	2 / Unlimited
<b>FUNCTION</b>	
Access Control	Anti-pass back, Multi-interlock, Multi-card unlock, Time Scheduler, Visitor Card Management, User Presence Report, Device Monitoring and Notifications, Access Logs, Bulk Management, Multi-Device Synchronization
User Management	System Admin, Admin, Manager, User
Alarm Functions	Door-close Time Out Alarm, Intrusion Alarm, Duress Alarm, Tamper Alarm, Out-of-drift Alarm
RTC & Time sync	Yes
<b>GENERAL</b>	
External Power Supply (not included)	DC 24V/1.25 A
12V DC Output Capacity*	1.6A
12V DC Output per Door Connector	700mA
Battery Backup	Lead Acid Batteries 12V 1.3Ah to 4.5Ah
Max. Relay throughput if powered through external source	30V DC @ 2A or 250V AC @ 12A
Working environment	-30°C to +60°C

**Note:** FREUND recommends using external power supply if relays need to be open for extended periods of time.

IP-INTEGRA FE-ACC-INT2D controller is supporting integration with all PROXY and MIFARE Readers based on Wiegand 26, Wiegand 34 and OSDP interface.

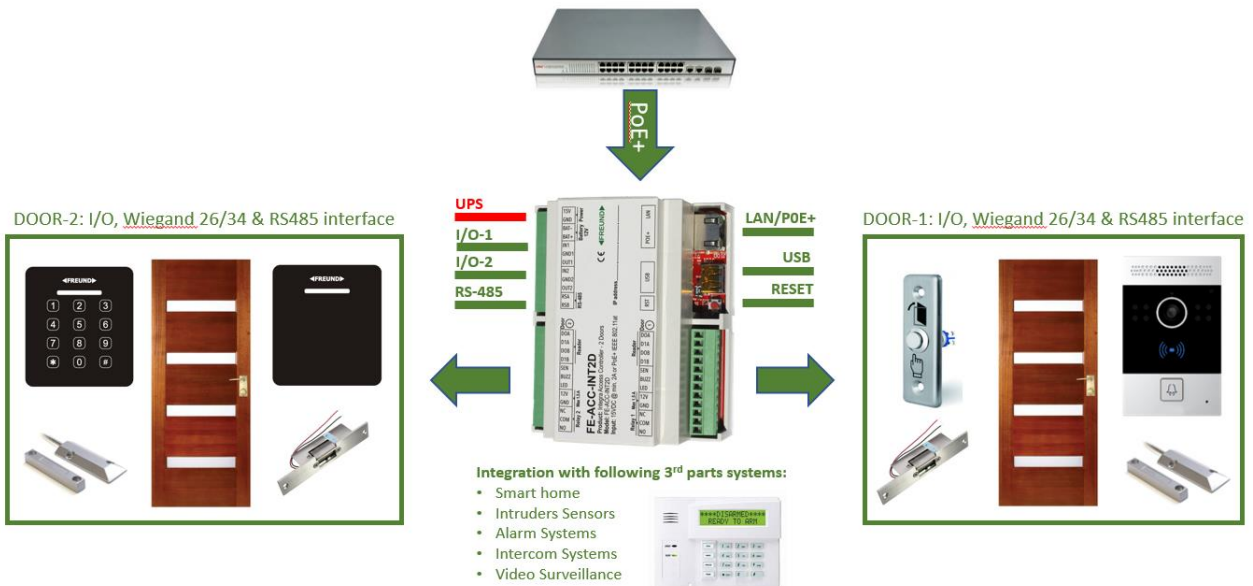
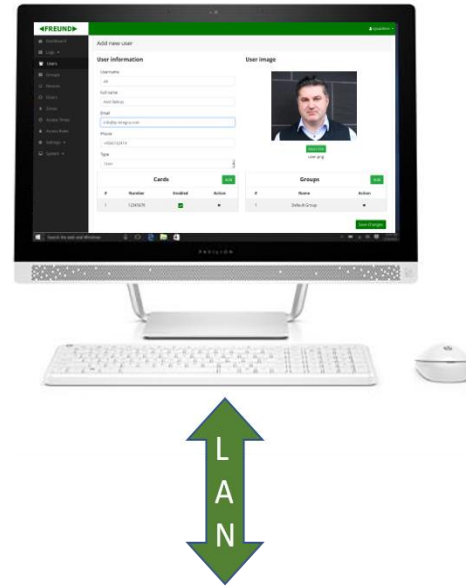
**Note:** To prevent compatibility problems, FREUND recommends using Freund IP-INTEGRA Peripherals and Readers.

\*It should be taken into consideration that max. output of ACC is split over 2 readers and relays connected.

## APPLICATION

FE-ACC-INT2D supporting following functions:

- Connection to LAN/PoE+ (no additional PS needed)
- Sourcing Readers, Sensors and Electrical Lock directly from Controller
- Fully programmable General Purpose I/O ports
- USB interface for additional memory, programming and debugging
- RESET button to return device in last working or factory default state
- OSDP port for additional Controllers and Readers
- Support for 4 Physical Doors through Wiegand and OSDP interface
- Limitless number of Virtual Doors from IP-INTEGRA INTERCOM system
- Integration with 3<sup>rd</sup> parts Building Automation and Surveillance Systems

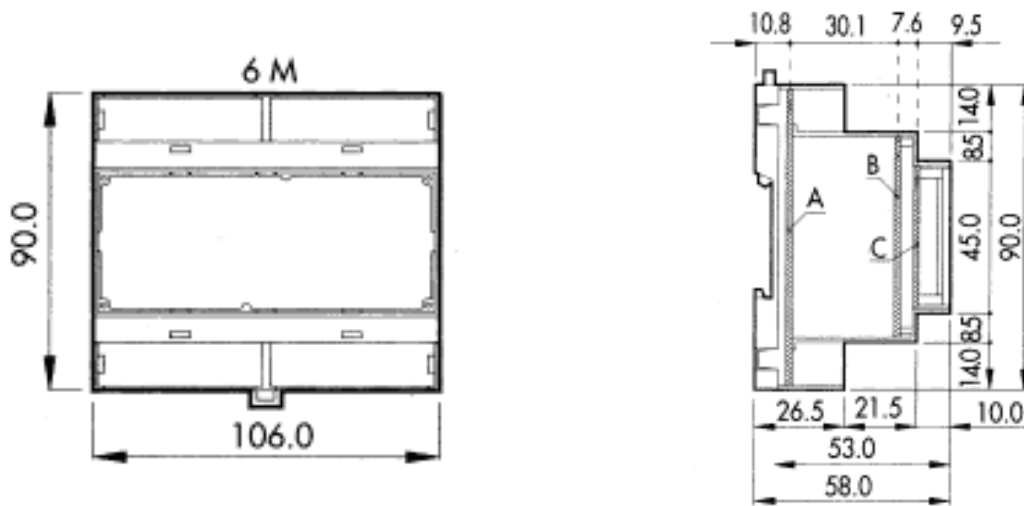


FREUND ELEKTRONIKA d.o.o

International Burch University | Francuske revolucije bb | 71210 Ilidza | Bosnia and Hercegovina

[www.ip-integra.com](http://www.ip-integra.com) | [info@ip-integra.com](mailto:info@ip-integra.com) | Tel. +387 33 922 890

## DIMENSIONS





**Freund Elektronik A/S, in cooperation with our sister company Freund Elektronika D.O.O. Sarajevo, is developing an IP-Based Intercoms, Audio Systems, Access Control and Smart Home solutions.**

**As a developer, manufacturer, and reseller, we have been self-improving and perfecting ourselves for over 30 years.**

**In the industry, we negotiate the most advanced and innovative solutions regarding the building communication. Our daily focus is on the development and user friendliness of our high quality and pleasantly designed products.**

**As a developer and manufacturer of our own IP-INTEGRA system, we have made a top-of-the-line products for Door Telephony, Public Audio, and Access Control solution.**

**Our development department, together with our partners, has created elegant and robust door phones, SIP-Centrals, Terminals, IP-Speakers, ACC Controllers, and applications with intelligent features using the most advanced technologies when available, and creating new technologies when they are not while keeping it simple for our customers.**

