

Application Note – Configuring a Web Relay



In this application note, we will describe how to set up and use the Web Relay functionality.

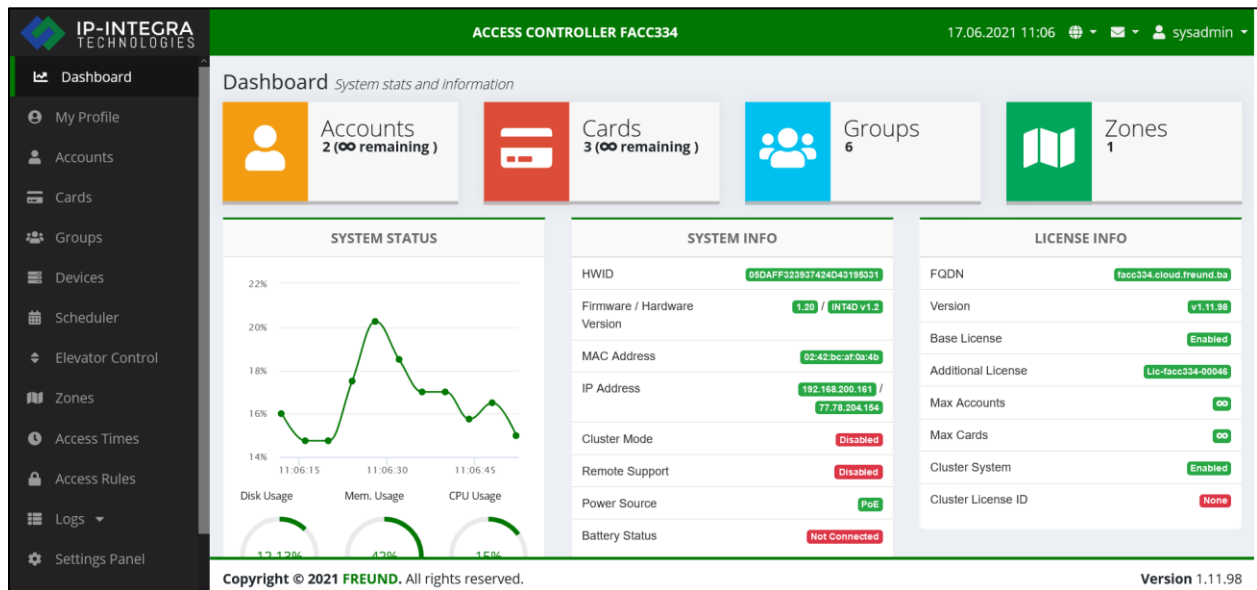
Introduction

Web Relay function provides remote control. Relay can be turned on or off using web browser or configuring Freund's intercoms such as FE-IPDS-29S to trigger relay with DTMF code it receives.

Configuring the Web Relay

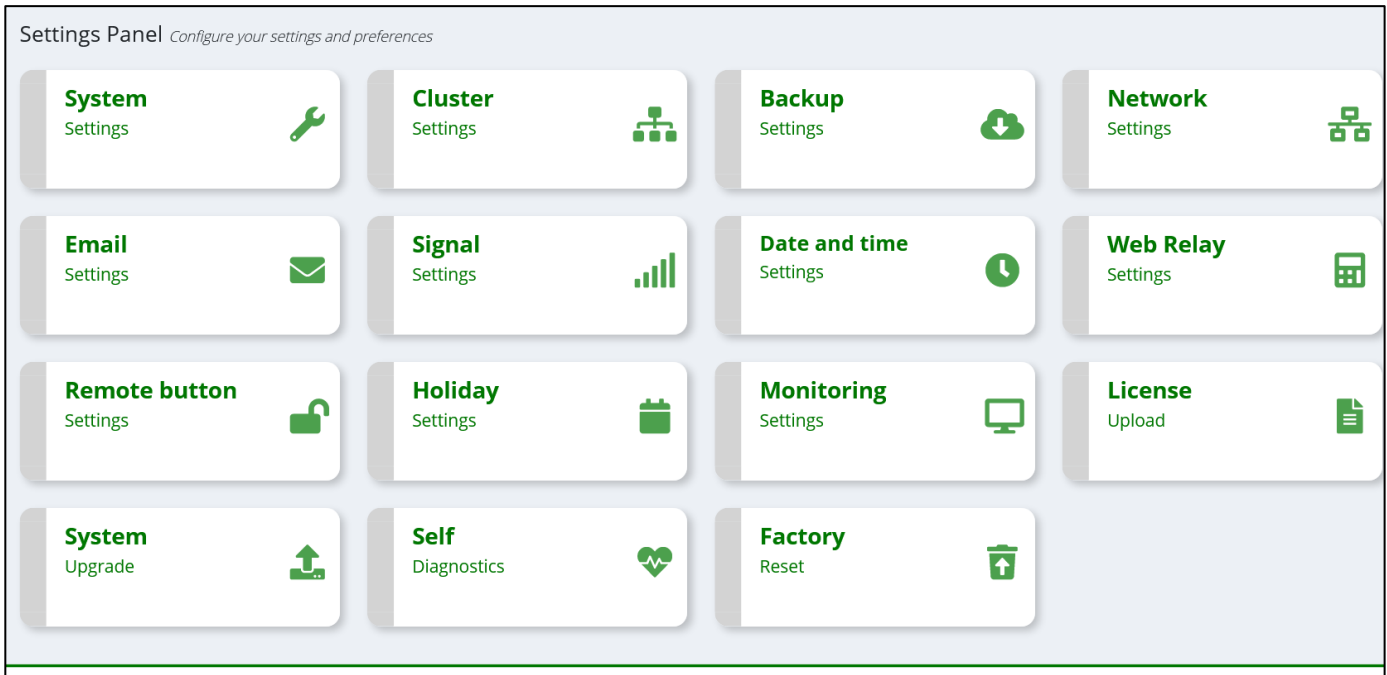
In order to configure and use Web Relay, we first need to log into the ACC module.

When we reach the Dashboard screen, click on 'Settings Panel' located in the menu on the left side of the screen.



PICTURE1 – DASHBOARD

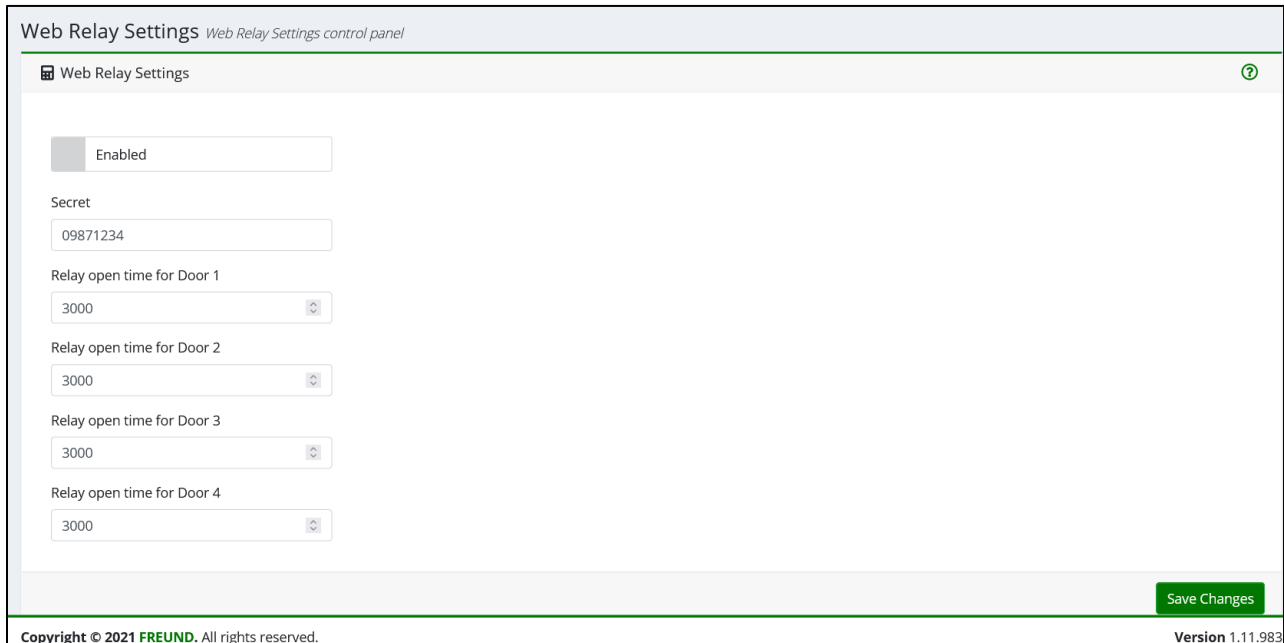
The following screen should show:



PICTURE 2 – SETTINGS PANEL

Go ahead and click on the 'Web Relay Settings'.

Form shown in the next picture will display:



PICTURE 3 – WEB RELAY SETTINGS

Under the Web Relay Setting, you can designate how long each relay will stay open when “Trigger” functionality is used (note: Value is in milliseconds), as well as turn the Web Relay ON or OFF.

Next, click on the question mark in top-right corner:



Next screen will show:

A screenshot of a dialog box titled "Web relay info and actions:" with a question mark icon on the left and a close 'x' icon on the right. The dialog contains four sections, one for each door. Each section has a green header bar with the door number, a door icon, a "Trigger" button, and a "Toggle" button with a checkmark. Below each header are the URLs for the "Trigger" and "Toggle" actions.

Door 1 **Trigger** **Toggle**

Trigger
<https://192.168.200.161/integration/webrelay/09871234/1>

Toggle
<https://192.168.200.161/integration/webrelay/09871234/1/toggle>

Door 2 **Trigger** **Toggle**

Trigger
<https://192.168.200.161/integration/webrelay/09871234/2>

Toggle
<https://192.168.200.161/integration/webrelay/09871234/2/toggle>

Door 3 **Trigger** **Toggle**

Trigger
<https://192.168.200.161/integration/webrelay/09871234/3>

Toggle
<https://192.168.200.161/integration/webrelay/09871234/3/toggle>

Door 4 **Trigger** **Toggle**

Trigger
<https://192.168.200.161/integration/webrelay/09871234/4>

Toggle
<https://192.168.200.161/integration/webrelay/09871234/4/toggle>

PICTURE 4 – WEB RELAY ACTIONS AND INFORMATION

The Web Relay functionality can be used in two ways.

1. Through Web Browser
2. Configuring Door Station (i.e FE-IPDS-29) via DTMF codes.

Web Relay through Web browser

To use Web Relay through web browser, simply copy and paste the URL shown under the door you wish to open to your web browser and press 'Enter'.

- Trigger – This setting will open the relay for the specified amount of time
- Toggle – This setting will open the relay on the selected door and keep it open until you visit the given link one more time.

Web Relay through Door Station

To set up and use the Web Relay function with our Freund Door Station, you will need to log into the Web Interface of the Door Station, click on 'Phone' in the menu on the left and select 'Web Relay'.

The screenshot displays the 'Web Relay' configuration page. On the left is a navigation menu with 'Phone' selected. The main area is titled 'Door Setting' and contains the following fields:

- Type: 2N WebRelay (dropdown)
- IP Address: 192.168.200.161
- UserName: sysadmin
- Password: [masked]

Below these is the 'Web Relay Action Setting' table:

Action ID	Web Relay Action	Web Relay Key	Web Relay Extension
Action ID 01	integration/webrelay/09871234/1	8	
Action ID 02			
Action ID 03			
Action ID 04			
Action ID 05			
Action ID 06			
Action ID 07			
Action ID 08			
Action ID 09			
Action ID 10			

At the bottom are 'Submit' and 'Cancel' buttons. On the right, a 'Help' section contains:

- Note:** Max length of characters for input box: 255: Broadsoft Phonebook server address; 127: Remote Phonebook URL & AUTOP Manual Update Server URL; 63: The rest of input boxes
- Warning:**
- Field Description:**
- Submit Shortcut:** [Submit] [Cancel]

PICTURE5 – WEB RELAY ON DOOR STATION

Please, follow the next steps carefully!

As shown in the Picture 5, the field '**Type**' needs to be set to „**2N WebRelay**“.

Under field '**IP Address**', you will type in the **IP address** of the **ACC module**, and enter correct **username** and **password** for the **ACC module**.

The URL to open the relay looks like this (also shown in the Picture 3):

<https://192.168.200.161/integration/webrelay/09871234/1>

The Doorstation will need the following **part** of the URL to work properly: '[integration/webrelay/09871234/1](https://192.168.200.161/integration/webrelay/09871234/1)'. Go ahead and copy the part of the URL **starting** from the word "**integration**".

Now under **Action ID** in '**Web Relay Action Setting**', paste the copied part URL.

Under '**Web Relay Key**', type in the key you want to use to open the door.

Click on 'Submit' to save the changes.

Finally, you can test if the setup has been done correctly by making a call to a Door Station from you Integra VoIP app, and during a call, press the number you entered under 'Web Relay Key' (in our case number 8) to open the door.