

# Application Note – Configuring a Remote Button



With the 1.12 version we are introducing a new feature, a Remote Button, to the ACC module.

In this Application Note, we will show you how to set up the ACC module and configure the Remote Button.

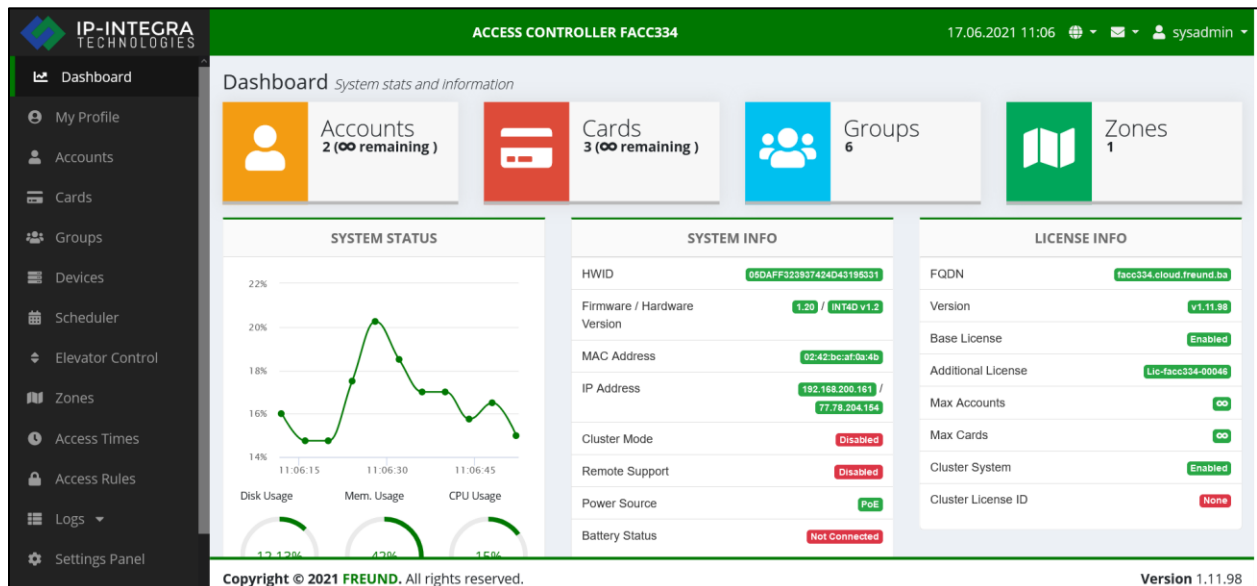
## Introduction

Remote button can be used for example by concierge to let the guests out of a building, or in office spaces by the receptionist.

## Configuring the Exit Button

In order to configure and use ACC Elevator Control Module, we first need to log into the device.

When we reach the Dashboard screen, click on Devices located in the menu on the left side of the screen.



PICTURE1 - DASHBOARD


The following screen should show:

The screenshot shows the 'Devices' overview page with the following table:

Type	Device Name	Host Name	IP Address	Cluster Info	Version	Doors	Status	Actions	
	INT4D-195331 <small>This device</small>	facc334	192.168.200.161 77.78.204.154	SA	v1.11.98	Door 1 A D Door 2 A D Door 3 A D Door 4 A D	OK		
		Reader A			Reader B			Zones	Actions
Door	Power	Type	Keypad	Tamper	Type	Keypad	Tamper		
Door 1	✓	Wiegand 34	✗	✗	Wiegand 34	✗	✗	Default Zone X	✎ 📶 📶 🔄
Door 2	✓	Wiegand 34	✗	✗	Wiegand 34	✗	✗	Default Zone X	✎ 📶 📶 🔄
Door 3	✓	Wiegand 34	✗	✗	Wiegand 34	✗	✗	Default Zone X	✎ 📶 📶 🔄
Door 4	✓	Wiegand 34	✗	✗	Wiegand 34	✗	✗	Default Zone X	✎ 📶 📶 🔄

Copyright © 2021 FREUND. All rights reserved. Version 1.11.98

PICTURE2 – DEVICES

Under “Actions” field, click on the “Edit Door” icon: 

Form shown in the next picture will display:

The 'Edit door' form contains the following fields and controls:

- Description: Door 1
- Power Status: ON (toggle)
- Floor Mode: OFF (toggle)
- Snapshots: OFF (toggle)
- Readers section:
  - Reader A: Type: Wiegand 34, Keypad: OFF, Tamper: OFF
  - Reader B: Type: Wiegand 34, Keypad: OFF, Tamper: OFF
- Relay open time: 3000
- Pin Input Timeout: 5000
- Button On Threshold: 100
- Door Not Closed Alert: OFF (toggle)
- Door Not Closed Timeout: 10000
- Buttons: Save Changes, Cancel

PICTURE3 – DOOR EDITING

Setting for Exit button is located under Reader B drop down menu:

Readers	Type	Keypad	Tamper
Reader A	Wiegand 34	<input type="checkbox"/>	<input type="checkbox"/>
Reader B	Exit Button	<input type="checkbox"/>	<input type="checkbox"/>
Relay open time	Pin Input Timeout	Door Not Closed Alert	Door Not Closed Timeout
2111	5000	<input type="checkbox"/>	10000

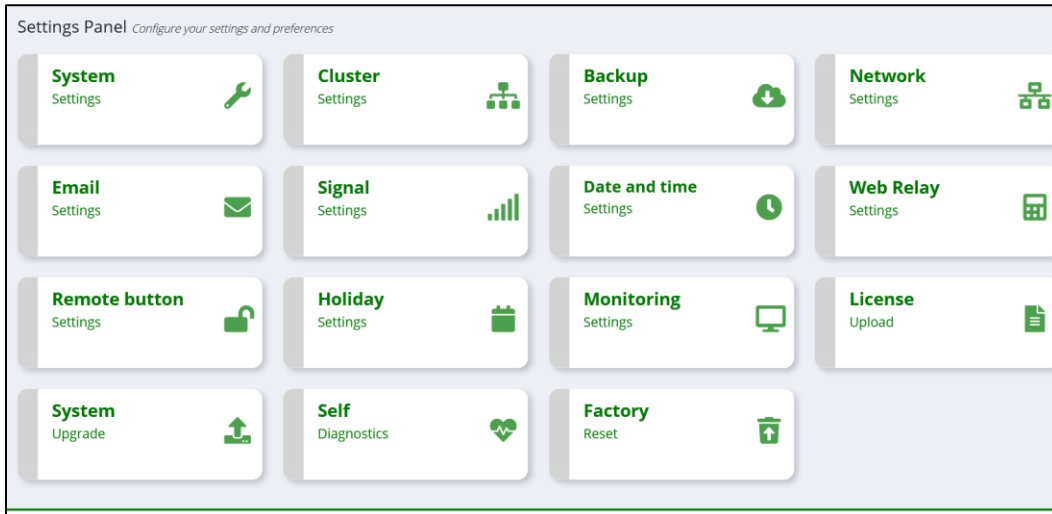
PICTURE 4 – EXIT BUTTON CONFIGURATION

“Relay open time” setting allows us to specify how long the doors stay unlocked after the button is pressed. Note that the value is in milliseconds.

When you have set the Button the way you want, click on “Save Changes”.

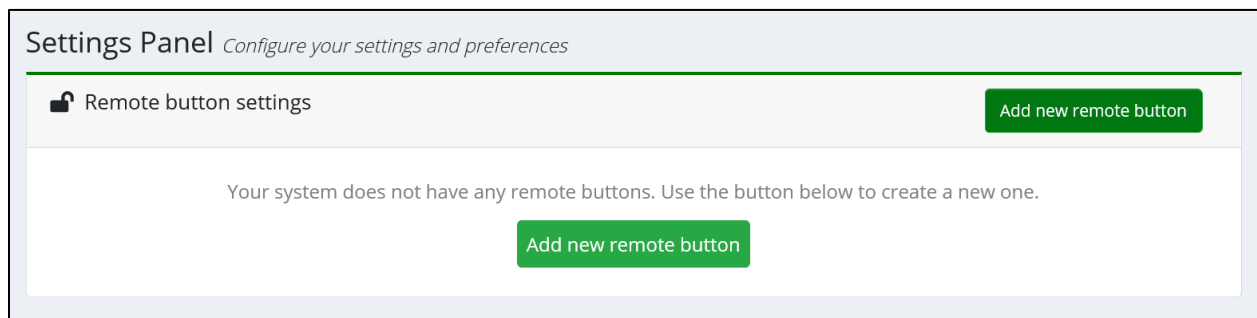
## Configuring the Remote Button

Now, click on Settings Panel located in the menu on the left side of the screen, and then Remote Button.



PICTURE 5 – REMOTE BUTTON IN SETTINGS PANEL

Next, click on „Add new remote button“ as shown in the picture below.



PICTURE 6 – REMOTE BUTTON SETTINGS

Following form will show:

Add new remote button

Name

Select door

Select door to open with button

Cancel Add new remote button

PICTURE 7 – ADD NEW REMOTE BUTTON FORM

In order to set it up, we first need to give it a name. Then, under “Select Door” form, click on the door which you configured to work as Exit Button, as shown in the Picture 3.

Next, we need to select a relay which we want to open with a remote button. Finally, click on “Add new remote button” to finish the setup.

After the correct setup, your button should look like in the picture below.

Settings Panel *Configure your settings and preferences*

Remote button settings Add new remote button

#	Name	Door	Relay	Actions
2.	Remote Button Test	Door 1 INT2D-118240	Door 4 INT2D-217724	