

## Application Note – Configuring a Remote Button



In this application note, we will describe how to set up and use the Web Relay functionality.

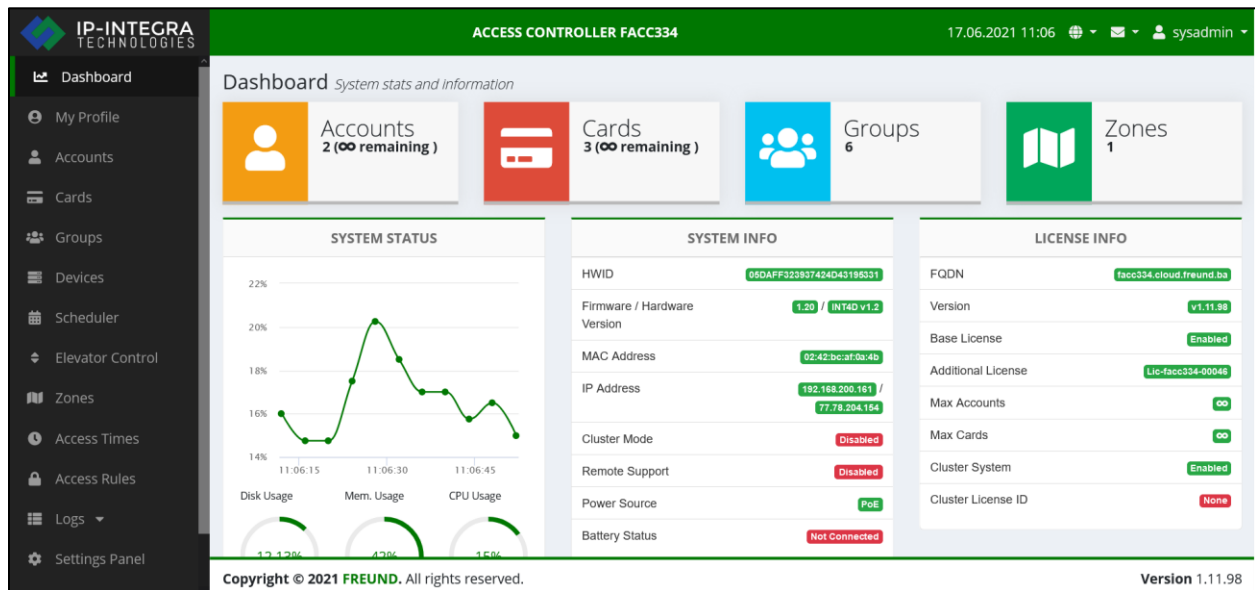
### Introduction

Web Relay function provides remote control. Relay can be turned on or off using web browser or configuring Freund's intercoms such as FE-IPDS-29S to trigger relay with DTMF code it receives.

### Configuring the Web Relay

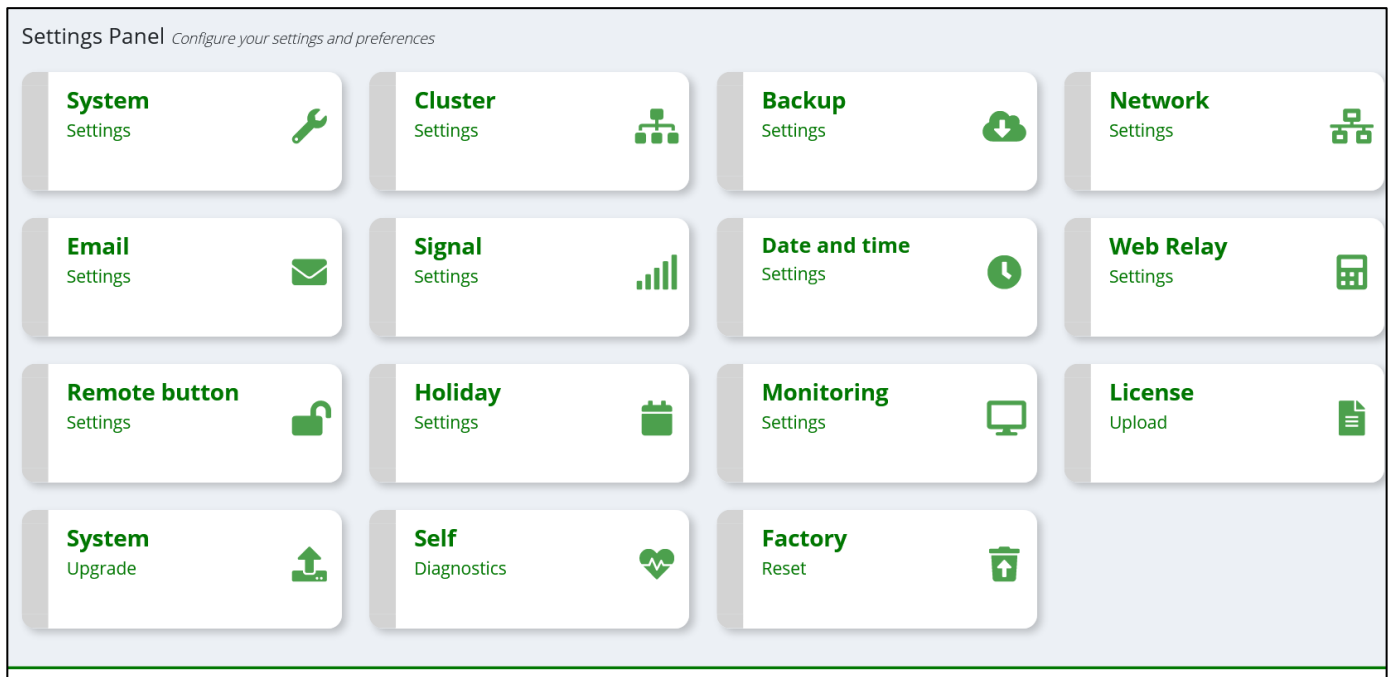
In order to configure and use Web Relay, we first need to log into the ACC module.

When we reach the Dashboard screen, click on 'Settings Panel' located in the menu on the left side of the screen.



PICTURE1 - DASHBOARD

The following screen should show:



PICTURE 2 – SETTINGS PANEL

Go ahead and click on the ‘Web Relay Settings’.

Form shown in the next picture will display:

The screenshot shows the 'Web Relay Settings' form with the subtitle 'Web Relay Settings control panel'. The form includes the following fields and controls:

- Web Relay Settings** (header with a question mark icon)
- Enabled** (toggle switch)
- Secret** (text input field containing '09871234')
- Relay open time for Door 1** (spin box containing '3000')
- Relay open time for Door 2** (spin box containing '3000')
- Relay open time for Door 3** (spin box containing '3000')
- Relay open time for Door 4** (spin box containing '3000')
- Save Changes** (button)

At the bottom of the page, the footer reads: 'Copyright © 2021 FREUND. All rights reserved.' and 'Version 1.11.983'.

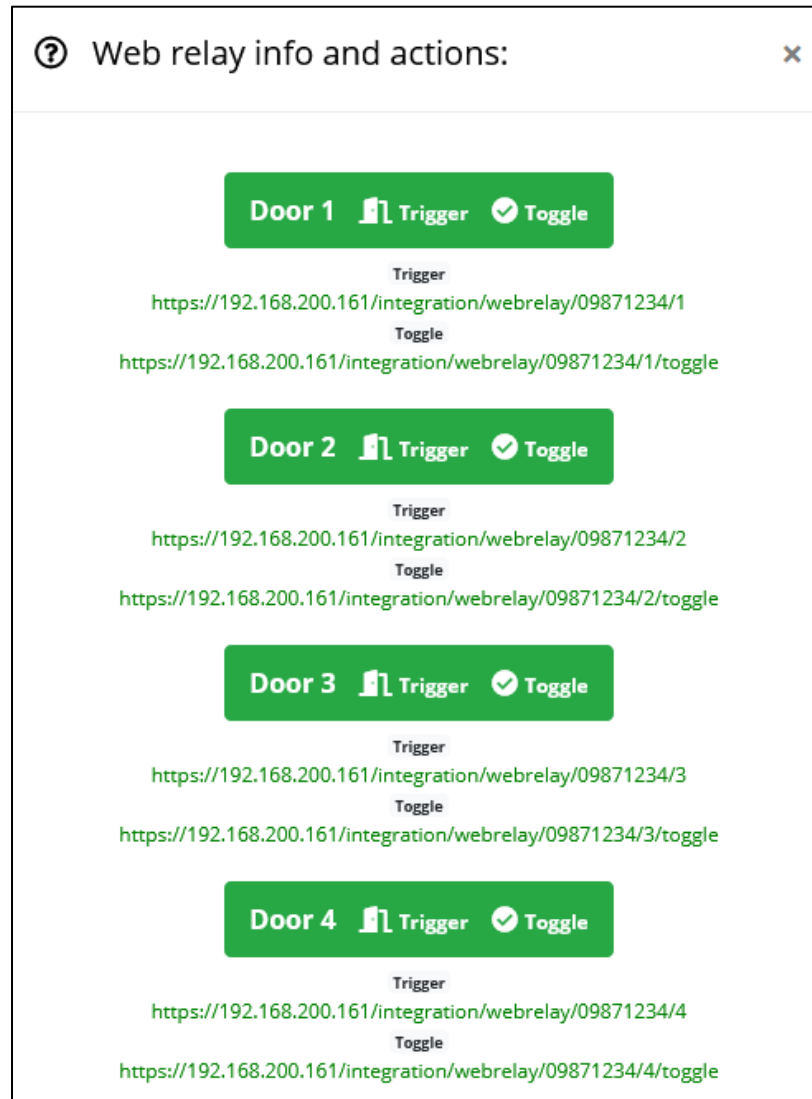
PICTURE 3 – WEB RELAY SETTINGS

Under the Web Relay Setting, you can designate how long each relay will stay open when “Trigger” functionality is used (note: Value is in milliseconds), as well as turn the Web Relay ON or OFF.

Next, click on the question mark in top-right corner:



Next screen will show:



PICTURE 4 – WEB RELAY ACTIONS AND INFORMATION

The Web Relay functionality can be used in two ways.

1. Through Web Browser
2. Configuring Door Station (i.e FE-IPDS-29) via DTMF codes.

## Web Relay through Web browser

To use Web Relay through web browser, simply copy and paste the URL shown under the door you wish to open to your web browser and press 'Enter'.

- Trigger – This setting will open the relay for the specified amount of time
- Toggle – This setting will open the relay on the selected door and keep it open until you visit the given link one more time.

## Web Relay through Door Station

To set up and use the Web Relay function with our Freund Door Station, you will need to log into the Web Interface of the Door Station, click on 'Phone' in the menu on the left and select 'Web Relay'.

**Door Setting**

**Web Relay**

Type: 2N WebRelay  
IP Address: 192.168.200.161  
UserName: sysadmin  
Password: .....

**Web Relay Action Setting**

Action ID	Web Relay Action	Web Relay Key	Web Relay Extension
Action ID 01	integration/webrelay/09871234/1	8	
Action ID 02			
Action ID 03			
Action ID 04			
Action ID 05			
Action ID 06			
Action ID 07			
Action ID 08			
Action ID 09			
Action ID 10			

**Submit** **Cancel**

**Help**

**Note:**  
Max length of characters for input box:  
255: Broadsoft Phonebook server address  
127: Remote Phonebook URL & AUTOP Manual Update Server URL  
63: The rest of input boxes

**Warning:**

**Field Description:**

**Submit Shortcut**  
**Submit** **Cancel**

PICTURE5 – WEB RELAY ON DOOR STATION

**Please, follow the next steps carefully!**

As shown in the Picture 5, the field '**Type**' needs to be set to „**2N WebRelay**“.

Under field '**IP Address**', you will type in the **IP address** of the **ACC module**, and enter correct **username** and **password** for the **ACC module**.

The URL to open the relay looks like this (also shown in the Picture 3):

<https://192.168.200.161/integration/webrelay/09871234/1>

The Doorstation will need the following **part** of the URL to work properly: '[integration/webrelay/09871234/1](https://192.168.200.161/integration/webrelay/09871234/1)'. Go ahead and copy the part of the URL **starting** from the word “**integration**”.

Now under **Action ID** in '**Web Relay Action Setting**', paste the copied part URL.

Under '**Web Relay Key**', type in the key you want to use to open the door.

Click on 'Submit' to save the changes.

Finally, you can test if the setup has been done correctly by making a call to a Door Station from you Integra VoIP app, and during a call, press the number you entered under 'Web Relay Key' (in our case number 8) to open the door.